

# LED STREETLIGHTS SOLAR SERIES PRODUCT SERIES DATASHEET



## LED Streetlights Solar Series (EL-SST2-E)



E-Lover Street Light Solar Series state of the art design with low light decay, high color rendering index Bridgelux LED chip(50000hours lifespan) source light and high quality low weight aluminum alloy housing fill in a high brightness and long lifespan street light. Its popular design makes a perfect solution for multiple street lighting applications with minimum revamping cost

### Applications:



## PRODUCT FEATURES

- State of the art design. compact in structure and nice in appearance.
- High color rendering index SMD LED chips source light with high-quality.
- High quality 3 years warranty LiFePO4 battery with 5-8 years lifespan.
- High efficiency monocrystalline silicon solar panels.
- IP65 for waterproof.
- No mercury and lead. No UV. No infrared. No radiation. Without causing any flickering, helpful to protect the eyes.
- Motion sensor: 100% power if people comes, 30% power if without people.
- Back up 3-5 days if save model.



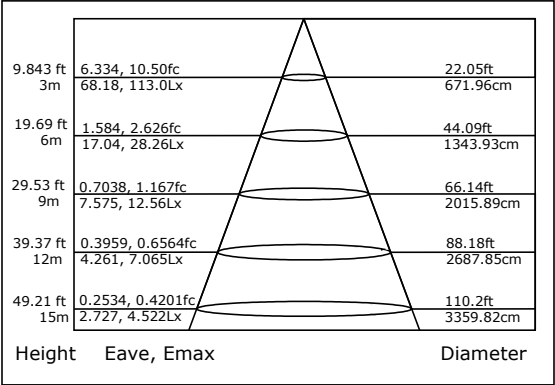
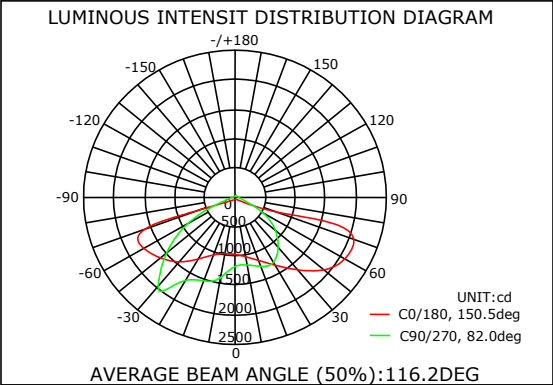
LED STREETLIGHTS SOLAR SERIES  
PRODUCT SERIES DATASHEET



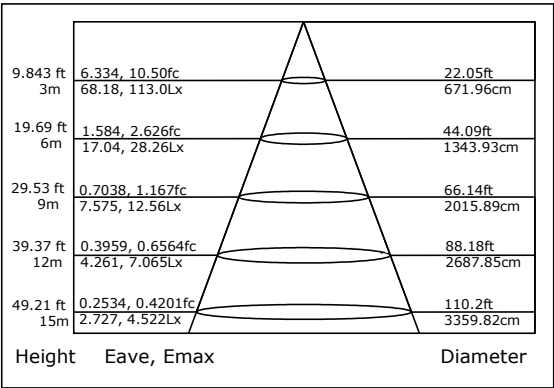
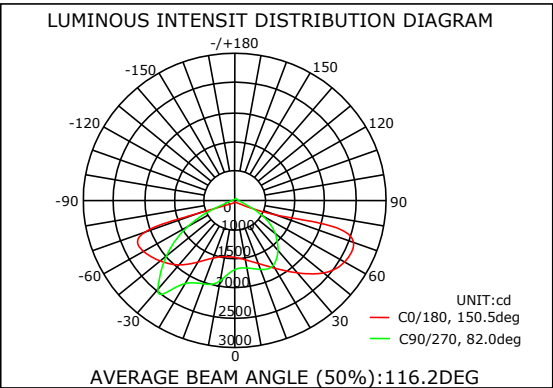
ILLUMINANCE DIAGRAM

Product Illuminance:

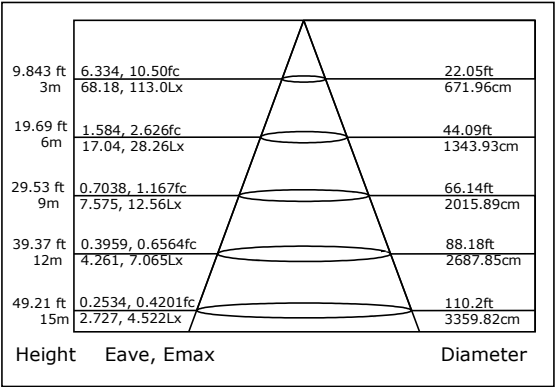
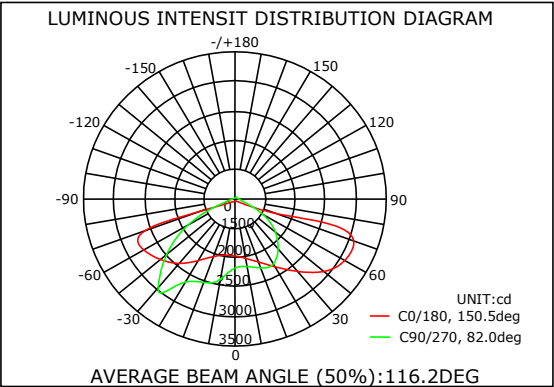
60 Watts



80 Watts



100 Watts



# LED STREETLIGHTS SOLAR SERIES PRODUCT SERIES DATASHEET



## TECHNICAL DATA

### Electrical characteristics:

Product Name	Solar Panel Voltage	Solar Panel Power	Battery Voltage	Battery Capacity	Charge Time	Full Power Last Time	Save Model Last Time	Dimmable
EL-SST2-E-30W	DC18V	45W	12V	20AHrs	6-8h	>8h	>24h	Y
EL-SST2-E-40W	DC18V	55W	12V	26AHrs	6-8h	>8h	>24h	Y
EL-SST2-E-50W	DC18V	70W	12V	34AHrs	6-8h	>8h	>24h	Y
EL-SST2-E-60W	DC16V	80W	12V	40AHrs	6-8h	>8h	>24h	Y
EL-SST2-E-80W	DC18V	110W	12V	56AHrs	6-8h	>8h	>24h	Y
EL-SST2-E-100W	DC36V	130W	24V	34AHrs	6-8h	>8h	>24h	Y

Note 1: Absolute ratings @ 25°C.

Note 2: 60W 80W 100W for residential street, 1 line road, and Pedestrian walk pad.

Note 3: Operating temperature -25~+45, Storage temperature -30~+70 , Relative humidity 10-95%, Atmosphere Pressure 70-106KPa.

# LED STREETLIGHTS SOLAR SERIES PRODUCT SERIES DATASHEET



## TECHNICAL DATA

### Optical Characteristics:

Part number	Color	Color Temperature [°K]	Luminescence [lm]	Lumen Efficiency [lm/w]	CRI (Ra)	Beam angle [°]
EL-SST2-E-30W-CW	Cold White	6000	3300lm	110	70	120
EL-SST2-E-30W-NW	Nature White	4000	3150lm	105	70	120
EL-SST2-E-30W-WW	Warm White	3000	3000lm	100	70	120
EL-SST2-E-40W-CW	Cold White	6000	4400lm	110	70	120
EL-SST2-E-40W-NW	Nature White	4000	4200lm	105	70	120
EL-SST2-E-40W-WW	Warm White	3000	4000lm	100	70	120
EL-SST2-E-50W-CW	Cold White	6000	5500lm	110	70	120
EL-SST2-E-50W-NW	Nature White	4000	5200lm	105	70	120
EL-SST2-E-50W-WW	Warm White	3000	5000lm	100	70	120
EL-SST2-E-60W-CW	Cold White	6000	6600lm	110	70	120
EL-SST2-E-60W-NW	Nature White	4000	6300lm	105	70	120
EL-SST2-E-60W-WW	Warm White	3000	6000lm	100	70	120
EL-SST2-E-80W-CW	Cold White	6000	8800lm	110	70	120
EL-SST2-E-80W-NW	Nature White	4000	8400lm	105	70	120
EL-SST2-E-80W-WW	Warm White	3000	8000lm	100	70	120
EL-SST2-E-100W-CW	Cold White	6000	11000lm	110	70	120
EL-SST2-E-100W-NW	Nature White	4000	10500lm	105	70	120
EL-SST2-E-100W-WW	Warm White	3000	10000lm	100	70	120

Note1: Absolute ratings @ 25°C.

Note2: Tolerance of measurement of luminous intensity±15%.

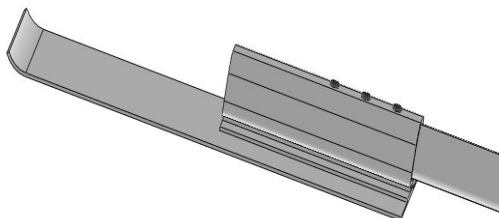
# LED STREETLIGHTS SOLAR SERIES PRODUCT SERIES DATASHEET



## PRODUCT INSTALLATION:

---

1> Connect brown cable of Lamp with cable from Pole, then Screw fixed lamp to the pole arm.



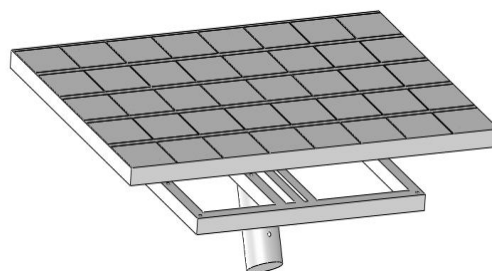
2> Screw fixed solar panel to the support.

Accessories: Screws: 4pcs

Nuts: 4pcs

Gaskets: 4pcs

Spring shim: 4pcs



3> Screw fixed battery box to the pole.

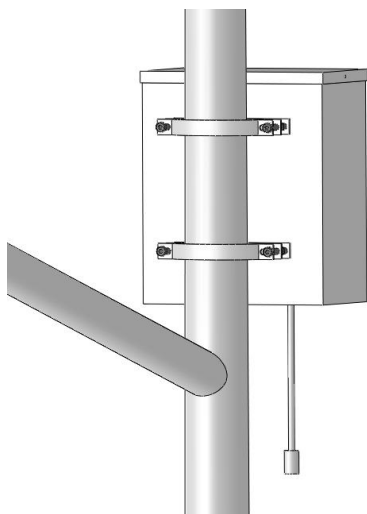
Accessories: Screws: 4pcs

Nuts: 4pcs

Gaskets: 4pcs

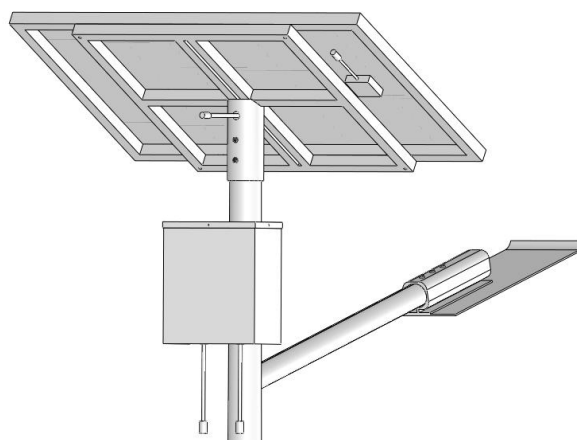
Spring shim: 4pcs

Hoops: 2pcs



4> Screw fixed solar panel support to the poles, then connect lamp cable and solar panel cable with relative cable from battery box.

Accessories: Screws: 4pcs



## LED STREETLIGHTS SOLAR SERIES PRODUCT SERIES DATASHEET



### SAFETY

1. **Always** consult a qualified, licensed electrician prior to the installation of this product.
2. **Always** ensure that all components are joined properly before they are installed.
3. It is recommended that adequate airflow and heat sink be taken into account in the application and installation of this product. Improper thermal management may lead to premature failure.
4. If any doubt about the installation or use of this product, consult a competent electrician.
5. Exceeding the operating temperature values may damage LED chips by reducing the total lamp life and lumen output, and inversely impact color consistency.
6. Switch off power of the mains supply or respectively of the connection lead before doing any works.
7. Avoid voltage drops by using a dedicated line for each maximum power consumption line.
8. The manufacturer rates each power supply for maximum power output at optimum thermal and voltage conditions. As with any power supply, true actual maximum continuous current output depends upon various environmental factors such as ambient temperature, line voltage fluctuations, and orientation that may affect heat dissipation. For optimum performance, make sure the load is between 50% and 80% of the total capacity of the power supply.
9. LED products are continuously being improved upon in ever-shortening manufacturing cycles. LED color temperature (kelvin), lumen output, and product appearance can change from order to order. Please note that variation in color temperature (kelvin) is commonly +/- 250k and brightness (lumens) is +/- 10%.

### PACKING <sup>5</sup>:

Product Name	Outer Carton Size(L×W×H)[mm]	Qty/Carton [pcs]	Gross Weight [Kg]	Unit Weight [Kg]
EL-SST2-E-30W	630×290×290	2	7.88	5.88
EL-SST2-E-40W	630×290×290	2	7.88	5.88
EL-SST2-E-50W	630×290×290	2	9.88	7.88
EL-SST2-E-60W	630×290×290	2	9.88	7.88
EL-SST2-E-80W	730×290×290	2	13.26	11.26
EL-SST2-E-100W	730×290×290	2	13.26	11.26

Note 5: The default package information is only for reference.

## LED STREETLIGHTS SOLAR SERIES PRODUCT SERIES DATASHEET



### OTHER E-LOVER PRODUCTS:

---

For more information about E-Lover products, please visit our website

[www.szelovert.com](http://www.szelovert.com)

### DISCLAIMER:

---

E-Lover reserves the right to modify the design of our products as part of the company's program of continuous improvement. E-Lover cannot guarantee to match existing installed product for subsequent orders or replace the product exactly to match the product you are replacing in product appearance, color, or brightness. Specifications are subject to change without notice.