



LED DOWN LIGHT II(EL-DL2EC)



E-Lover LED down light Series state of the art design with low light decay, high color rendering index LED chip source light and high quality low weight aluminum alloy housing fill in a high brightness and long lifespan. Down light is a uniform illumination can all directions point light source.

Basic Specification

|             |   |
|-------------|---|
| Watt        | 7W,12W,18W,25W,30W,40W  |
| IP          | 40  |
| Chips       | Epistar COB chips   |
| Voltage     | CE driver, AC100-240V   |
| CRI         | 80+   |
| Cut size    | 125mm   |
| Application | Airport,Church,Cinema,Gallery,Hospital,Hotel,Kitchen,Meeting Room,Shopping Mall |
| Material    | Aluminum alloy, Glass   |



Garage



Restaurant



Shopping



Offi



Airpo



## PRODUCT FEATURES

---

- LED driver contact with the heatsink directly and the heat dissipation is much stronger.
- As you know the good heat dissipation is important for the lifespan ,so we use the thickest aluminum heat sink to reduce the decay.So our led light decay rate is just 1% using 10000HRS;
- High color rendering index COB LED chips(50000hours Lifespan) source light with high-quality.
- The cooling structure is under patent protection (included the appearance).
- Low temperatures. Long lifespan more than 50000hours.
- No mercury and lead. No UV. No infrared. No radiation. Without causing any flickering, helpful to protect the eyes.
- CE (TUV) for EMC and LVD approved and RoHS compliant.





PRODUCT DIAGRAM

Size:

| Part number  | W<br>[mm] | L<br>[mm] | H<br>[mm] |
|--------------|-----------|-----------|-----------|
| EL-DL2EC-7W  | 89.7      | 89.7      | 56        |
| EL-DL2EC-12W | 110       | 110       | 68        |
| EL-DL2EC-18W | 137.5     | 137.5     | 82        |
| EL-DL2EC-25W | 165       | 165       | 91        |
| EL-DL2EC-30W | 195       | 195       | 107       |
| EL-DL2EC-40W | 235       | 235       | 127.5     |

TECHNICAL DATA

Electrical characteristics\*:

| Part number  | Input Voltage<br>[V] | Frequency<br>[Hz] | Power<br>[W] | Traditional equivalent<br>[W] | Power Factor<br>[%] | Dimmable |
|--------------|----------------------|-------------------|--------------|-------------------------------|---------------------|----------|
| EL-DL2EC-7W  | AC100-240V           | 50 / 60           | 7            | 14                            | ≥0.90               | Optional |
| EL-DL2EC-12W | AC100-240V           | 50 / 60           | 12           | 24                            | ≥0.90               | Optional |
| EL-DL2EC-18W | AC100-240V           | 50 / 60           | 18           | 36                            | ≥0.90               | Optional |
| EL-DL2EC-25W | AC100-240V           | 50 / 60           | 25           | 50                            | ≥0.90               | Optional |
| EL-DL2EC-30W | AC100-240V           | 50 / 60           | 30           | 60                            | ≥0.90               | Optional |
| EL-DL2EC-40W | AC100-240V           | 50 / 60           | 40           | 80                            | ≥0.90               | Optional |

Note 1: Absolute ratings @ 25°



TEHNICAL DATA

Optical Characteristics:

| Part number     | Color        | Color Temperature [°K] | Luminescence [lm] | Lumen Efficiency [lm/w] | CRI (Ra) | Beam angle [ ° ] |
|-----------------|--------------|------------------------|-------------------|-------------------------|----------|------------------|
| EL-DL2EC-7W-CW  | Cold White   | 6000                   | 700               | 100                     | 80       | 120              |
| EL-DL2EC-7W-NW  | Nature White | 4000                   | 665               | 95                      | 80       | 120              |
| EL-DL2EC-7W-WW  | Warm White   | 3000                   | 630               | 90                      | 80       | 120              |
| EL-DL2EC-12W-CW | Cold White   | 6000                   | 1200              | 100                     | 80       | 120              |
| EL-DL2EC-12W-NW | Nature White | 4000                   | 1140              | 95                      | 80       | 120              |
| EL-DL2EC-12W-WW | Warm White   | 3000                   | 1080              | 90                      | 80       | 120              |
| EL-DL2EC-18W-CW | Cold White   | 6000                   | 1800              | 100                     | 80       | 120              |
| EL-DL2EC-18W-NW | Nature White | 4000                   | 1710              | 95                      | 80       | 120              |
| EL-DL2EC-18W-WW | Warm White   | 3000                   | 1620              | 90                      | 80       | 120              |
| EL-DL2EC-25W-CW | Cold White   | 6000                   | 2500              | 100                     | 80       | 120              |
| EL-DL2EC-25W-NW | Nature White | 4000                   | 2375              | 95                      | 80       | 120              |
| EL-DL2EC-25W-WW | Warm White   | 3000                   | 2250              | 90                      | 80       | 120              |
| EL-DL2EC-30W-CW | Cold White   | 6000                   | 3000              | 100                     | 80       | 120              |
| EL-DL2EC-30W-NW | Nature White | 4000                   | 2850              | 95                      | 80       | 120              |
| EL-DL2EC-30W-WW | Warm White   | 3000                   | 2700              | 90                      | 80       | 120              |
| EL-DL2EC-40W-CW | Cold White   | 6000                   | 4000              | 100                     | 80       | 120              |
| EL-DL2EC-40W-NW | Nature White | 4000                   | 3800              | 95                      | 80       | 120              |
| EL-DL2EC-40W-WW | Warm White   | 3000                   | 3600              | 90                      | 80       | 120              |

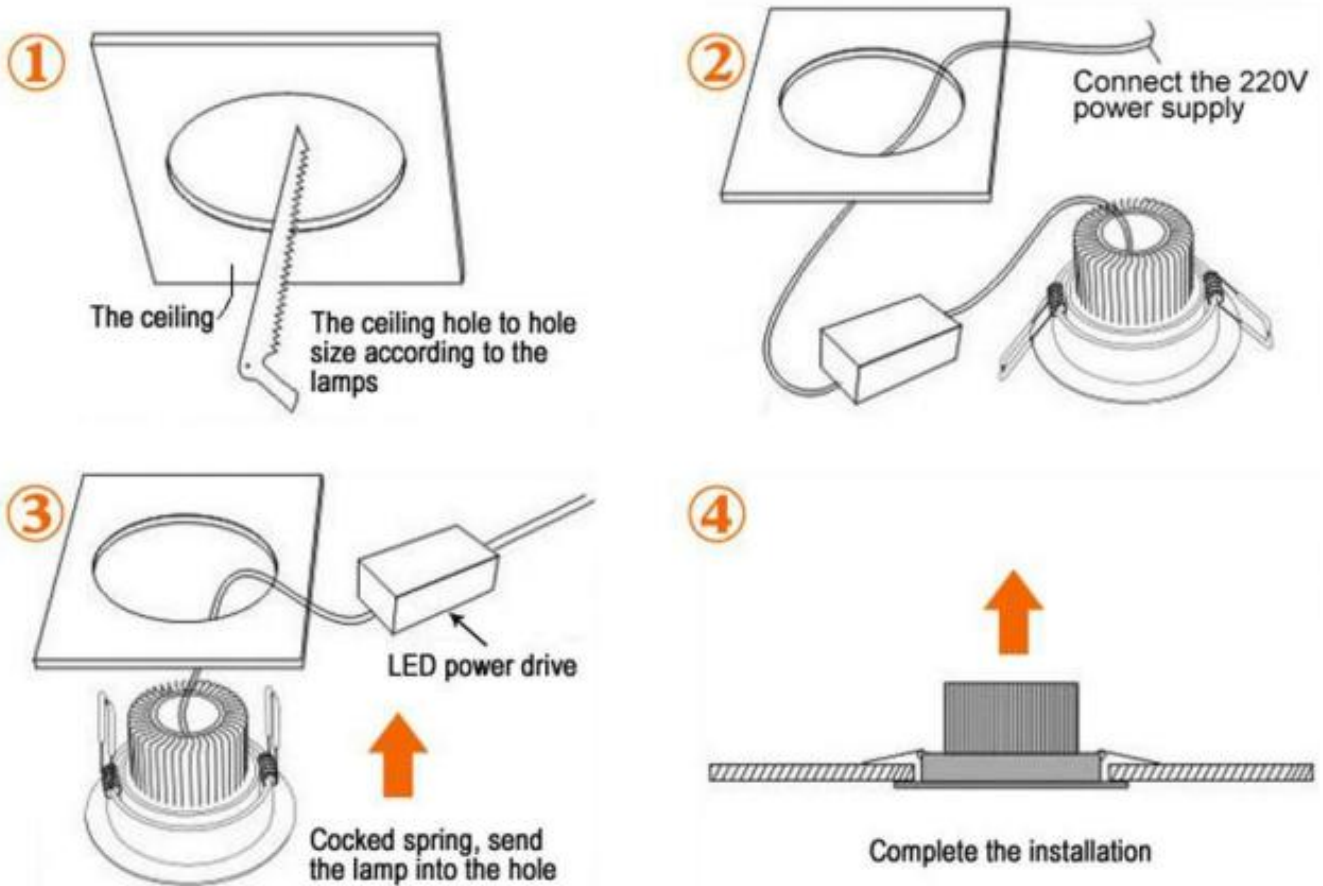
Note1: Absolute ratings @ 25°C.

Note2: Tolerance of measurement of luminous intensity±15%.

PRODUCT INSTALLATION:

---

Precaution: Switch off power before doing any works.





## SAFETY

---

1. **Always** consult a qualified, licensed electrician prior to the installation of this product.
2. **Always** ensure that all components are joined properly before they are installed.
3. It is recommended that adequate airflow and heatsink be taken into account in the application and installation of this product. Improper thermal management may lead to premature failure.
4. If any doubt about the installation or use of this product, consult a competent electrician.
5. Exceeding the operating temperature values may damage LED chips by reducing the total lamp life and lumen output, and inversely impact color consistency.
6. Switch off power of the mains supply or respectively of the connection lead before doing any works.
7. Avoid voltage drops by using a dedicated line for each maximum power consumption line .
8. The manufacturer rates each power supply for maximum power output at optimum thermal and voltage conditions. As with any power supply, true actual maximum continuous current output depends upon various environmental factors such as ambient temperature, line voltage fluctuations, and orientation that may affect heat dissipation. For optimum performance, make sure the load is between 50% and 80% of the total capacity of the power supply.
9. LED products are continuously being improved upon in ever-shortening manufacturing cycles. LED color temperature (kelvin), lumen output, and product appearance can change from order to order. Please note that variation in color temperature (kelvin) is commonly +/- 250k and brightness (lumens) is +/- 10%.

## Packing

---

| Product Name | Outer Carton Size(L×W×H)[mm] | Qty/Carton [pcs] |
|--------------|------------------------------|------------------|
| EL-DL2EC-7W  | 500*480*245                  | 48               |
| EL-DL2EC-12W | 630*580*295                  | 48               |
| EL-DL2EC-18W | 645*350*300                  | 24               |
| EL-DL2EC-25W | 560*550*235                  | 18               |
| EL-DL2EC-30W | 650*635*270                  | 18               |
| EL-DL2EC-40W | 535*510*455                  | 12               |

LED DOWN LIGHT SERIES II  
PRODUCT SERIES DATASHEET



OTHER E-Lover PRODUCTS:

---

For more information about E-Lover products, please visit our website

[www.szelover.com](http://www.szelover.com)

DISCLAIMER:

---

E-Lover reserves the right to modify the design of our products as part of the company's program of continuous improvement. E-Lover cannot guarantee to match existing installed product for subsequent orders or replace the product exactly to match the product you are replacing in product appearance, color, or brightness. Specifications are subject to change without notice.